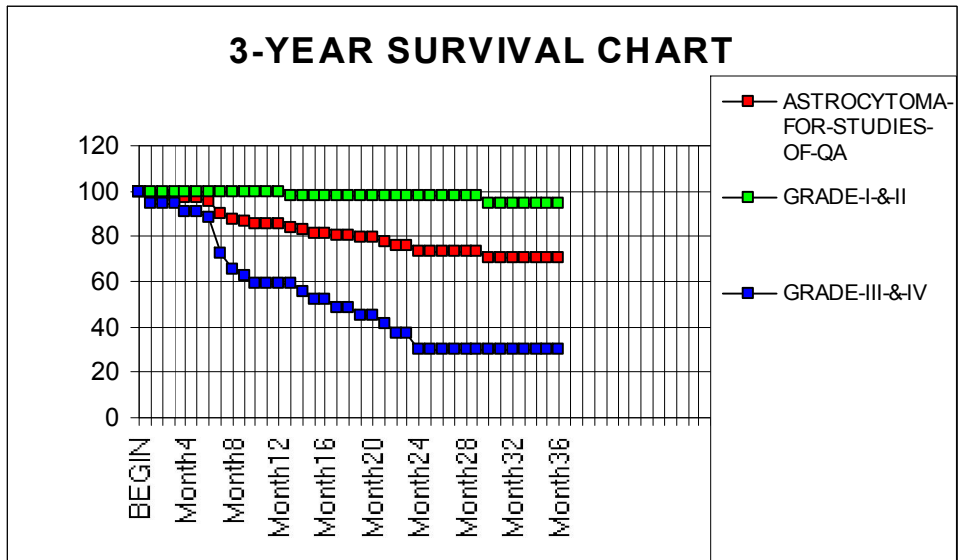




The Cancer Committee at Miami Children's Hospital has selected a physician driven study based on registry data that measures quality and outcomes, which was initiated in 2008 in order to fulfill standard 8 as required by the American College of Surgeons, Commission on Cancer, Cancer Program Standards 2009 Revised Edition. Our study includes a summary of the analysis of data, findings, and recommendations for the study.

STUDIES OF QUALITY & OUTCOMES (Std. 8.1)
SURVIVAL RATE CALCULATION BY KAPLAN-MEIER METHOD
Population of study: 3 YEAR Survival of ASTROCYTOMA by Grade

	ASTROCYTOMA	GRADE-I-&-II	GRADE-III-&-IV
BEGIN %	100	100	100
Month1	97.9	100	94.1
Month2	97.9	100	94.1
Month3	97.9	100	94.1
Month4	96.8	100	91
Month5	96.8	100	91
Month6	95.7	100	87.9
Month7	90	100	72.2
Month8	87.7	100	65.6
Month9	86.6	100	62.3
Month10	85.4	100	59.1
Month11	85.4	100	59.1
Month12	85.4	100	59.1
Month13	84.2	98	59.1
Month14	82.9	98	55.8
Month15	81.6	98	52.3
Month16	81.6	98	52.3
Month17	80.3	98	48.8
Month18	80.3	98	48.8
Month19	79	98	45
Month20	79	98	45
Month21	77.6	98	41.3
Month22	76.1	98	37.5
Month23	76.1	98	37.5
Month24	72.9	98	30
Month25	72.9	98	30
Month26	72.9	98	30
Month27	72.9	98	30
Month28	72.9	98	30
Month29	72.9	98	30
Month30	71	94.8	30
Month31	71	94.8	30
Month32	71	94.8	30
Month33	71	94.8	30
Month34	71	94.8	30
Month35	71	94.8	30
Month36	71	94.8	30



Note: The population selected for this 3 year survival study are cases that were diagnosed at MCH between 2003 and 2007 and are considered analytic cases, meaning these cases were diagnosed at the facility and/or administered any of the first course of treatment after the registry reference date and are cases (class 0,1, & 2). There were a total of 102 Astrocytomas accessioned during this time period. 66 were Low Grade and 36 were High Grade.

SURVIVAL RATE CALCULATION BY KAPLAN-MEIER METHOD

Population for this study: GRADE-I-&-II

INT MTH	ALIVE IN MTH	DEAD IN MTH	LAST SEEN IN MTH	PROP. DYING	PROP. SURV	SURVIVAL RATE
13	52	1	1	0.019608	0.980392	0.980392
30	31	1	0	0.032258	0.967742	0.948767

Number of cases excluded: 0

Observed survival rate for 36 months: 94.88%

Median months of survival: 28.50

Standard deviation: 26.78

Average age at diagnosis: 8.24

Median age at diagnosis: 10.00

NOTE:

Selected interval is from: Dx Date to Date of Last Contact

SURVIVAL RATE CALCULATION BY KAPLAN-MEIER METHOD

Population for this study: GRADE-III-&-IV

INT MTH	ALIVE IN MTH	DEAD IN MTH	LAST SEEN IN MTH	PROP. DYING	PROP. SURV	SURVIVAL RATE
1	36	2	2	0.058824	0.941176	0.941176
4	32	1	1	0.032258	0.967742	0.910816
6	29	1	0	0.034483	0.965517	0.879408
7	28	5	0	0.178571	0.821429	0.722371
8	23	2	1	0.090909	0.909091	0.656701
9	20	1	0	0.05	0.95	0.623866
10	19	1	0	0.052632	0.947368	0.591031
14	18	1	0	0.055556	0.944444	0.558196
15	17	1	1	0.0625	0.9375	0.523309
17	15	1	0	0.066667	0.933333	0.488421
19	13	1	0	0.076923	0.923077	0.450851
21	12	1	0	0.083333	0.916667	0.41328
22	11	1	0	0.090909	0.909091	0.375709
24	10	2	0	0.2	0.8	0.300567

Number of cases excluded: 0

Observed survival rate for 36 months: 30.06%

Median months of survival: 12.00

Standard deviation: 21.43

Average age at diagnosis: 7.42

Median age at diagnosis: 7.00

NOTE:

Selected interval is from: Dx Date to Date of Last Contact

SURVIVAL RATE CALCULATION BY KAPLAN-MEIER METHOD

Population for this study: ASTROCYTOMA-FOR-STUDIES-OF-QA

INT MTH	ALIVE IN MTH	DEAD IN MTH	LAST SEEN IN MTH	PROP. DYING	PROP. SURV	SURVIVAL RATE
1	102	2	5	0.020619	0.979381	0.979381
4	92	1	2	0.011111	0.988889	0.968499
6	86	1	0	0.011628	0.988372	0.957238
7	85	5	0	0.058824	0.941176	0.90093
8	80	2	2	0.025641	0.974359	0.877829
9	76	1	0	0.013158	0.986842	0.866279
10	75	1	2	0.013699	0.986301	0.854412
13	70	1	1	0.014493	0.985507	0.842029
14	68	1	1	0.014925	0.985075	0.829461
15	66	1	1	0.015385	0.984615	0.8167
17	62	1	0	0.016129	0.983871	0.803528
19	60	1	0	0.016667	0.983333	0.790136
21	57	1	0	0.017544	0.982456	0.776274
22	56	1	3	0.018868	0.981132	0.761627
24	51	2	3	0.041667	0.958333	0.729893
30	39	1	1	0.026316	0.973684	0.710685

Number of cases excluded: 0

Observed survival rate for 36 months: 71.07%

Median months of survival: 23.50

Standard deviation: 18.99

Average age at diagnosis: 7.95

Median age at diagnosis: 9.00

NOTE:

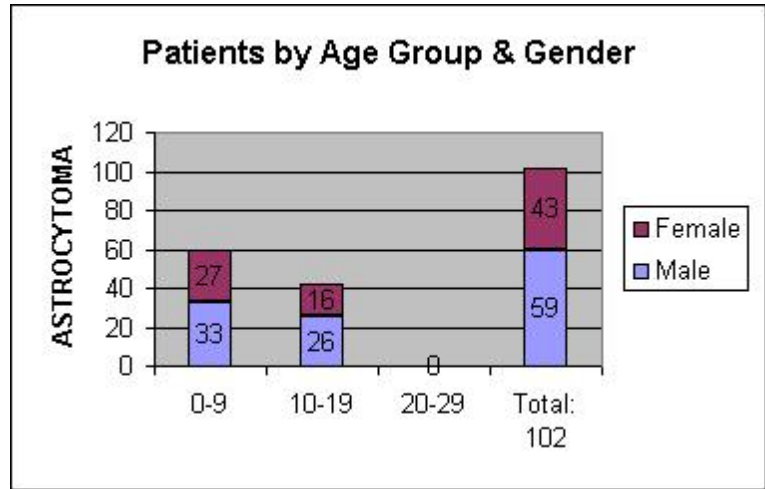
Selected interval is from: Dx Date to Date of Last Contact

SITE TABULATION FOR ASTROCYTOMA-FOR-STUDIES-OF-QA

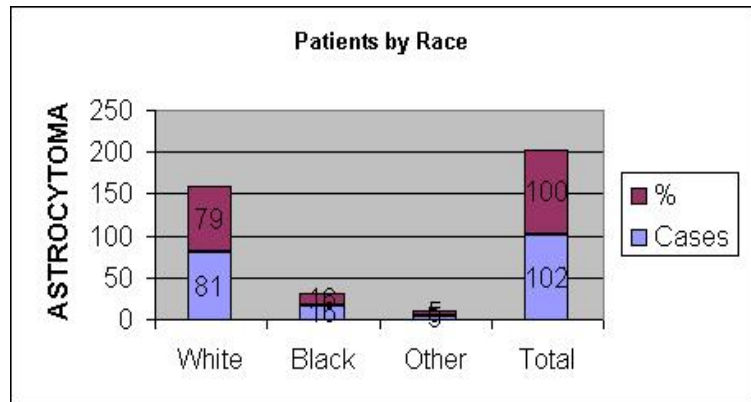
SITE NAME	NBR-CASES		MALE		FEMALE	
MENINGES	1	0.98	0	0	1	100
BRAIN	95	93.14	57	60	38	40
OTHER NERVOUS SYSTEM	6	5.88	2	33.33	4	66.67
TOTAL CASES	102	100	59	57.84	43	42.16

Miami Children's Hospital
 Studies of Quality & Outcomes (Std. 8.1)
 Years 2003 - 2007

Age Range	Male	Female
0-9	33	27
10-19	26	16
20-29	0	0
Total: 102	59	43



Race	Cases	%
White	81	79
Black	16	16
Other	5	5
Total	102	100



County	Cases	%
Dade	38	37
Palm Beach	27	26
Broward	14	14
Out of State	14	14
Other	9	9
Total:	102	100

