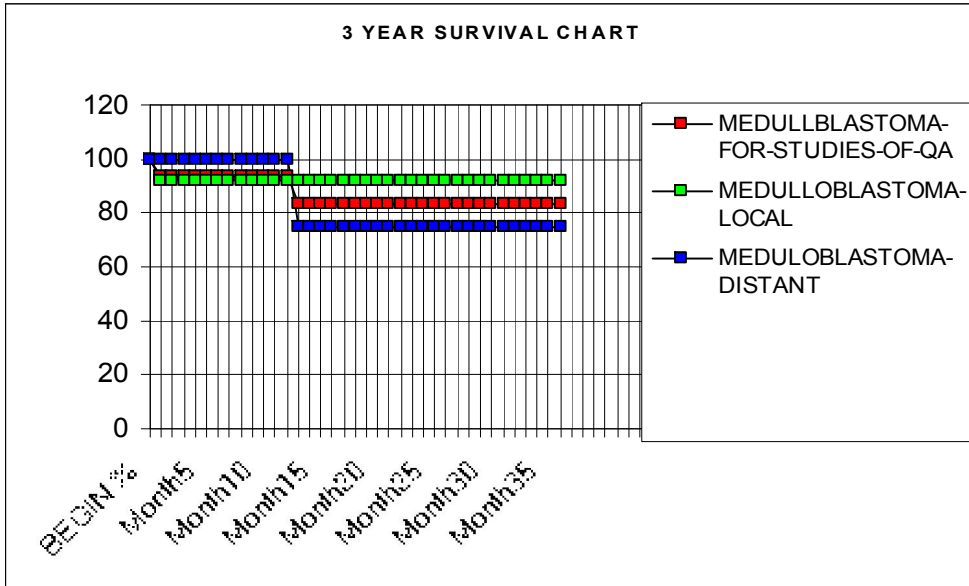




The Cancer Committee at Miami Children's Hospital has selected a physician driven study based on registry data that measures quality and outcomes, which was initiated in 2008 in order to fulfill standard 8 as required by the American College of Surgeons, Commission on Cancer, Cancer Program Standards 2009 Revised Edition. Our study includes a summary of the analysis of data, findings, and recommendations for the study.

**STUDIES OF QUALITY & OUTCOMES (Std. 8.1)**  
**SURVIVAL RATE CALCULATION BY KAPLAN-MEIER METHOD**  
**Population of study: 3 YEAR Survival of Medulloblastoma Local vs Distant**

	<b>MEDULLOBLASTOMA</b>	<b>LOCAL</b>	<b>DISTANT</b>
<b>BEGIN %</b>	100	100	100
Month1	93.7	91.6	100
Month2	93.7	91.6	100
Month3	93.7	91.6	100
Month4	93.7	91.6	100
Month5	93.7	91.6	100
Month6	93.7	91.6	100
Month7	93.7	91.6	100
Month8	93.7	91.6	100
Month9	93.7	91.6	100
Month10	93.7	91.6	100
Month11	93.7	91.6	100
Month12	93.7	91.6	100
Month13	83.3	91.6	75
Month14	83.3	91.6	75
Month15	83.3	91.6	75
Month16	83.3	91.6	75
Month17	83.3	91.6	75
Month18	83.3	91.6	75
Month19	83.3	91.6	75
Month20	83.3	91.6	75
Month21	83.3	91.6	75
Month22	83.3	91.6	75
Month23	83.3	91.6	75
Month24	83.3	91.6	75
Month25	83.3	91.6	75
Month26	83.3	91.6	75
Month27	83.3	91.6	75
Month28	83.3	91.6	75
Month29	83.3	91.6	75
Month30	83.3	91.6	75
Month31	83.3	91.6	75
Month32	83.3	91.6	75
Month33	83.3	91.6	75
Month34	83.3	91.6	75
Month35	83.3	91.6	75
Month36	83.3	91.6	75



**Note:** The populations selected for this 3 year survival study are cases that were diagnosed at MCH between 2003 and 2007 and are considered analytic cases, meaning these cases were diagnosed at this facility and/or administered any of the first course of treatment after the registry reference date and are cases (class 0,1 & 2). There were a total of 16 Medulloblastomas accessioned during this time period 12 were local and 4 were Distant.

## SURVIVAL RATE CALCULATION BY KAPLAN-MEIER METHOD

Population for this study: MEDULLBLASTOMA-FOR-STUDIES-OF-QA

INT MTH	ALIVE IN MTH	DEAD IN MTH	LAST SEEN IN MTH	PROP. DYING	PROP. SURV	SURVIVAL RATE
1	16	1	0	0.0625	0.9375	0.9375
13	9	1	0	0.111111	0.888889	0.833333

Number of cases excluded: 0

Observed survival rate for 36 months: 83.33%

Median months of survival: 15.50

Standard deviation: 18.52

Average age at diagnosis: 6.63

Median age at diagnosis: 7.50

NOTE:

Selected interval is from: Dx Date to Date of Last Contact

## SURVIVAL RATE CALCULATION BY KAPLAN-MEIER METHOD

Population for this study: MEDULLOBLASTOMA-LOCAL

INT MTH	ALIVE IN MTH	DEAD IN MTH	LAST SEEN IN MTH	PROP. DYING	PROP. SURV	SURVIVAL RATE
1	12	1	0	0.083333	0.916667	0.916667

Number of cases excluded: 0

Observed survival rate for 36 months: 91.67%

Median months of survival: 9.00

Standard deviation: 17.81

Average age at diagnosis: 7.83

Median age at diagnosis: 11.50

NOTE:

Selected interval is from: Dx Date to Date of Last Contact

## SURVIVAL RATE CALCULATION BY KAPLAN-MEIER METHOD

Population for this study: MEDULOBLASTOMA-DISTANT

INT MTH	ALIVE IN MTH	DEAD IN MTH	LAST SEEN IN MTH	PROP. DYING	PROP. SURV	SURVIVAL RATE
13	4	1	0	0.25	0.75	0.75

Number of cases excluded: 0

Observed survival rate for 36 months:  
75.00%

Median months of survival: 34.50

Standard deviation: 42.47

Average age at diagnosis: 3.00

Median age at diagnosis: 2.00

NOTE:

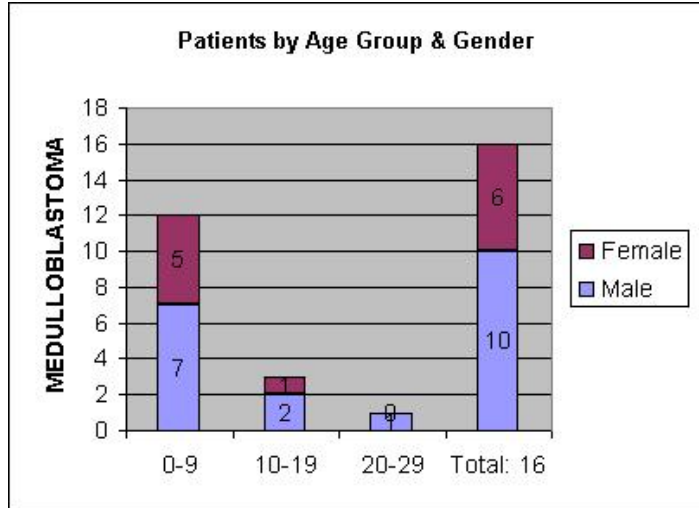
Selected interval is from: Dx Date to Date of  
Last Contact

**SITE TABULATION FOR MEDULLBLASTOMA-FOR-STUDIES-OF-QA**

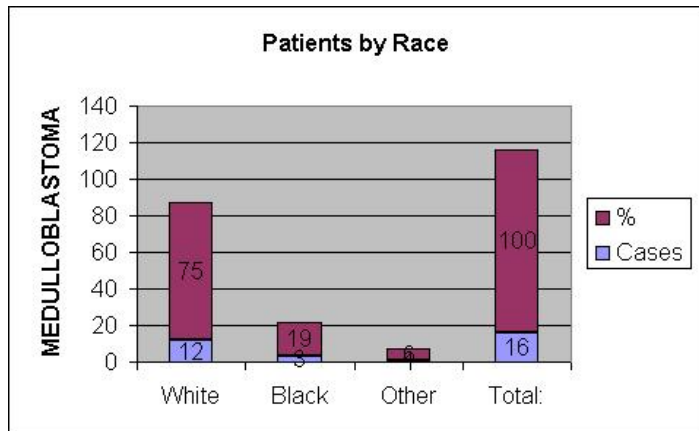
SITE NAME	NBR-CASES		MALE		FEMALE	
BRAIN	16	100	10	62.5	6	37.5
TOTAL CASES	16	100	10	62.5	6	37.5

**Miami Children's Hospital**  
 Studies of Quality & Outcomes (Std. 8.1)  
 Years 2003 - 2007

Age Range	Male	Female
0-9	7	5
10-19	2	1
20-29	1	0
Total: 16	<b>10</b>	<b>6</b>



Race	Cases	%
White	12	75
Black	3	19
Other	1	6
Total:	16	100



County	Cases	%
Dade	10	62
Palm Beach	2	13
Out of State	2	13
Broward	1	6
St. Lucie	1	6
Total:	<b>16</b>	<b>100</b>

