



Nicklaus Children's Hospital

Where Your Child Matters Most

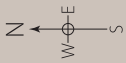
1ST FLOOR

You can park on either the Blue or Green parking garages.

Emergency Department Drop-off at Devonshire Entrance, Emergency Parking: 1st Floor Yellow garage (the rest of that garage is for employee parking)

Si lo desea usted puede estacionar su carro en los garajes Azul o Verde.

Zona de Bajada de Emergencia en la entrada Devonshire. Estacionamiento del departamento de emergencia: 1^{er} piso del garaje Amarillo. (el resto de este garaje es estacionamiento para empleados)



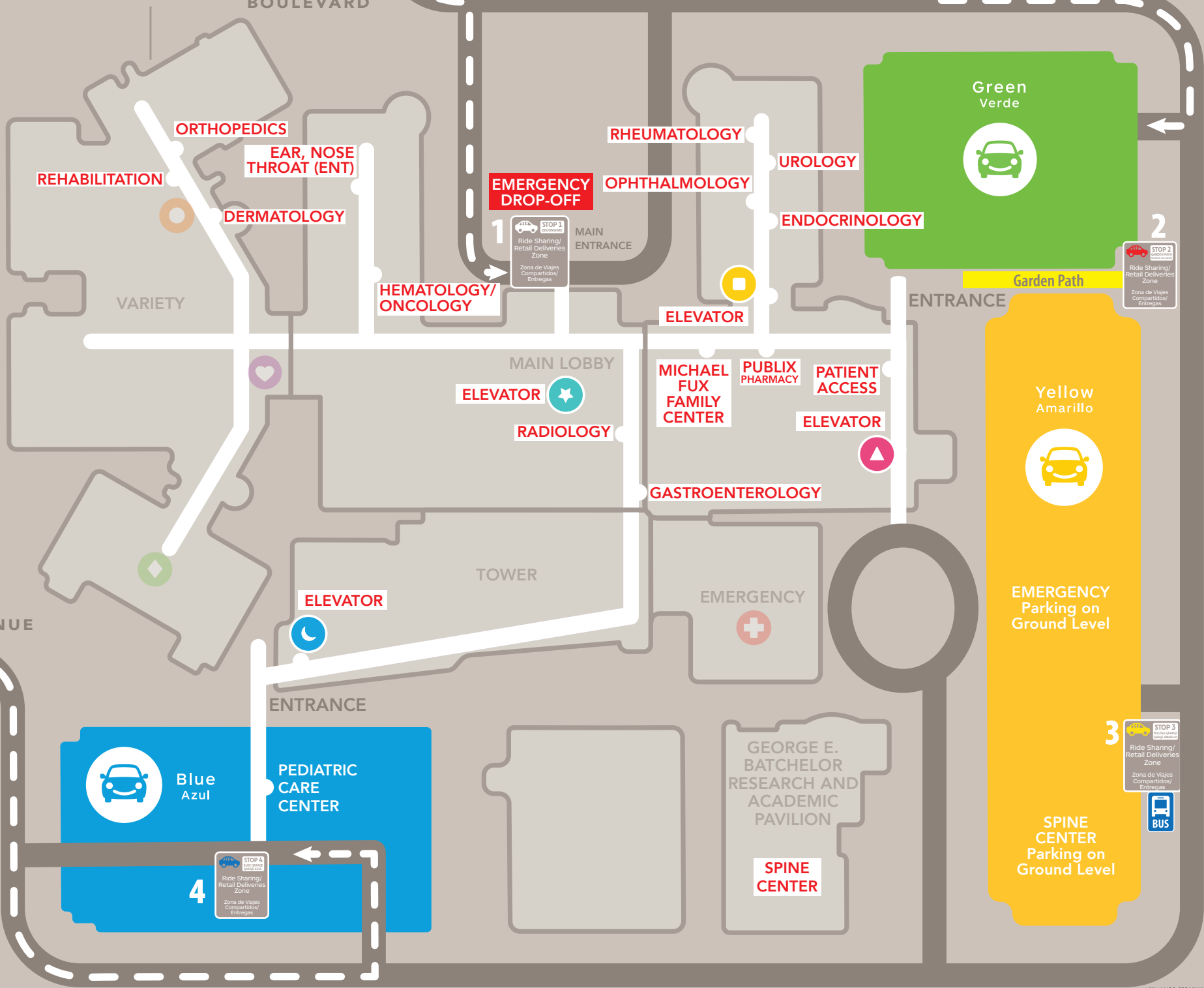
SW 62 AVENUE

Step-by-step wayfinding to help guide you on the hospital campus.

Una guía paso a paso para orientarle en el campus del hospital.



DEVONSHIRE BOULEVARD



REHABILITATION

ORTHOPEDICS

EAR, NOSE THROAT (ENT)

DERMATOLOGY

HEMATOLOGY/ ONCOLOGY

EMERGENCY DROP-OFF

RHEUMATOLOGY

OPHTHALMOLOGY

UROLOGY

ENDOCRINOLOGY

ELEVATOR

MAIN LOBBY

ELEVATOR

RADIOLOGY

MICHAEL FUX FAMILY CENTER

PUBLIX PHARMACY

PATIENT ACCESS

ELEVATOR

GASTROENTEROLOGY

TOWER

ELEVATOR

EMERGENCY

ENTRANCE

PEDIATRIC CARE CENTER

GEORGE E. BATCHELOR RESEARCH AND ACADEMIC PAVILION

SPINE CENTER

Green Verde



Garden Path

Yellow Amarillo



EMERGENCY Parking on Ground Level

SPINE CENTER Parking on Ground Level



2

3

4